

General Notes:

No current title report has been provided.

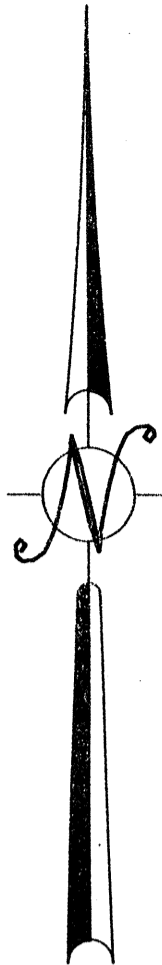
Underground utilities and subsurface facilities have not been located.

Other easements, restrictions and property rights may exist that are not shown on this plan.

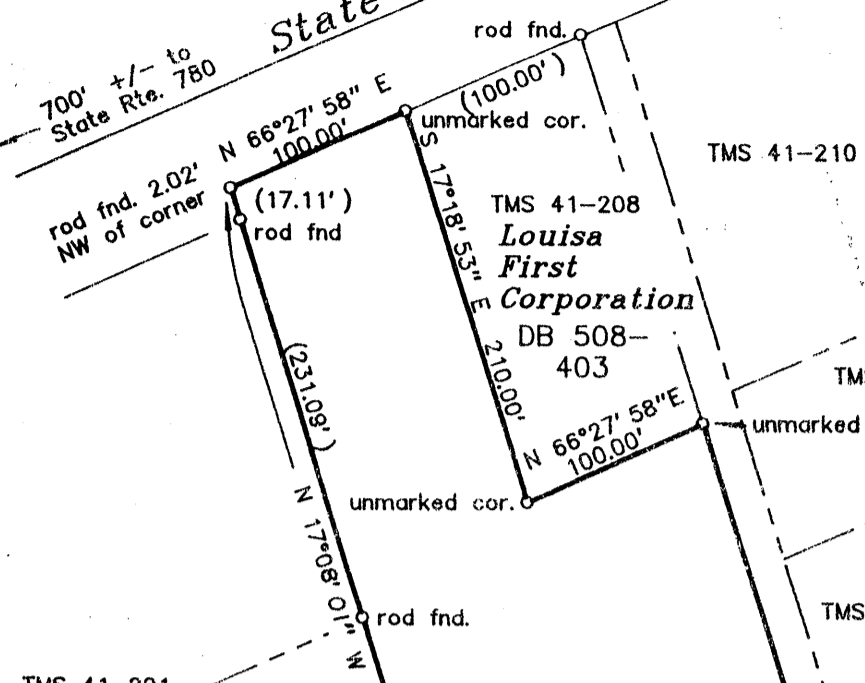
This lot appears to be mapped in FEMA Flood Zone "X" per Flood Insurance Rate Map, Community Number 510092, Panel 0150, Suffix B, dated November 5, 1997.

Bearings and Distances shown are based on a previous survey by James H. Bell, Jr., P.C. Dated 14 February 1995 and recorded in the Clerk's Office in Deed Book 508, Page 412, except line with T.D. Associates which is based on a current field survey

Virginia Grid North



State Route 22-208
700' +/- to State Rte. 780



TMS 41-208
Louisa First Corporation
DB 508-403

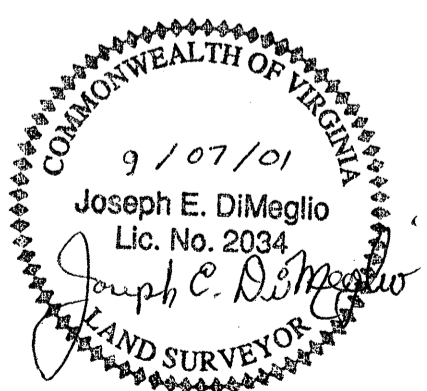
TMS 41-201
Louisa County Water Authority
DB 258-474

TMS 41-207
4.215 Acres
DB 505-403
Plat: DB 508-412

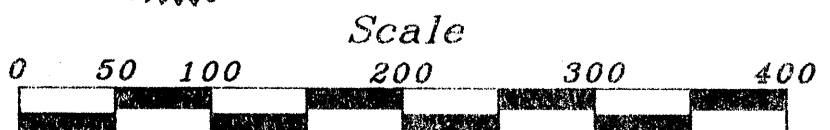
TMS 41-213
James Kinney
DB 152-296

TMS 41-202
T.D. Associates
DB 270-255
DB 615-682

TMS 41-204
Louisa County Industrial Development Authority
DB 231-117



Plat of 4.215 Acres
Standing in the Name of
Louisa First Corporation
Louisa District * Louisa County
Virginia
Scale: 1"= 100' 30 August 2001



Bell Surveys, Inc.
Professional Land Surveyors
Land Planning & Site Design
30 Industrial Dr., Suite 1B Louisa, Va. 23093
Phone (540) 967-1514 Fax (540) 967-1361